

VICINITY MAP (NOT TO SCALE)

LEGEND

- AC A/C UNIT
- ▲ BASKETBALL GOAL
- BOLLARD
- CB UG CABLE MARKER
- CO CLEANOUT
- CABLE VAULT
- ELECTRIC BOX
- ELECTRIC MANHOLE
- EM ELECTRIC METER
- ELECTRIC VAULT
- UG ELECTRIC MARKER
- FIRE DEPT. CONN.
- FIRE HYDRANT
- UG FIB. OPTIC MARKER
- UG FIB. OPTIC MANHOLE
- FLAG POLE
- FL FLOOD LIGHT
- FIBER OPTIC VAULT
- UG GAS MANHOLE
- GAS MANHOLE
- GAS METER
- GUY POLE
- GAS PUMP
- UG GAS MARKER
- GAS VALVE
- GUY ANCHOR
- HAND HOLE (TYPE UNKNOWN)
- HAND HOLE ELECTRIC
- HAND HOLE CABLE
- HAND HOLE TELEPHONE
- IRRIGATION CONTROL VALVE
- LIGHT STANDARD
- MANHOLE (TYPE UNKNOWN)
- MAILBOX
- MONITORING WELL
- NEWSPAPER STAND
- PULL BOX (TYPE UNKNOWN)
- PULL BOX ELECTRIC
- PULL BOX CABLE
- PULL BOX FIBER OPTIC
- PULL BOX TELEPHONE
- PAY PHONE
- UG PIPELINE MARKER
- PARKING METER
- POWER POLE
- METAL UTILITY POLE
- PP W/ LIGHT
- PP W/ GUY ANCHOR
- PP W/ CROSS
- ARM (LENGTH IN FEET)
- ROOF DRAIN
- TELEPHONE SAC BOX
- SECURITY CAMERA
- TRAFFIC SIGN
- SAN. SEWER MANHOLE
- UG SAN. SEWER MARKER
- TELEPHONE BOX
- UG TELEPHONE MARKER
- TRASH CAN
- TRAFFIC SIGNAL
- TRAFFIC SIGNAL CONTROL
- TRAFFIC SIGNAL POLE
- TRAFFIC SENSOR
- TEST STA. (TYPE UNKNOWN)
- TELEPHONE VAULT
- SEPTIC TANK
- STORM SEWER MANHOLE
- TRAFFIC CAMERA
- TELEPHONE MANHOLE
- VAULT (TYPE UNKNOWN)
- VENT
- UG WATER MARKER
- WATER METER
- WATER MANHOLE
- WATER VAULT
- WATER VALVE
- PIN FLAG BLUE
- PIN FLAG GREEN
- PIN FLAG PURPLE
- PIN FLAG PINK
- PIN FLAG ORANGE
- PIN FLAG RED
- PIN FLAG WHITE
- PIN FLAG YELLOW
- PIN FLAG CABLE
- PIN FLAG ELECTRIC
- PIN FLAG FIBER OPTIC
- PIN FLAG GAS
- PIN FLAG SEWER
- PIN FLAG TELEPHONE
- PIN FLAG WATER
- 1/2-INCH IRON ROD
- W/PACHECO KOCH" CAP FOUND
- "- CUT IN CONCRETE FOUND
- 3/4-INCH ALUMINUM DISK
- STAMPED "BUCKNER PARK-PACHECO KOCH" SET
- (C.M.) CONTROLLING MONUMENT
- PROPERTY LINE
- EASEMENT LINE
- SETBACK LINE
- FENCE
- OVERHEAD UTILITY LINE
- HAND RAIL
- GUARD RAIL
- UNDERGROUND ELECTRIC LINE
- UNDERGROUND TELEPHONE LINE
- UNDERGROUND CABLE LINE
- UNDERGROUND GAS LINE
- STORM DRAIN LINE
- WATER LINE
- 6" SAN. SEWER LINE
- 15" SAN. SEWER LINE
- EXIST CONTOUR

LOT TABLE		
LOT NO.	ACRES	SF
LOT 1A	2.872	125,087
LOT 2A	7.792	339,427
<b>TOTAL</b>	<b>10.664</b>	<b>464,514</b>

OWNER:  
DALLAS INDEPENDENT SCHOOL DISTRICT  
3801 HERSHEL AVENUE  
DALLAS, TEXAS 75201  
PH: (972) 925-7210  
CONTACT: ED LEVINE

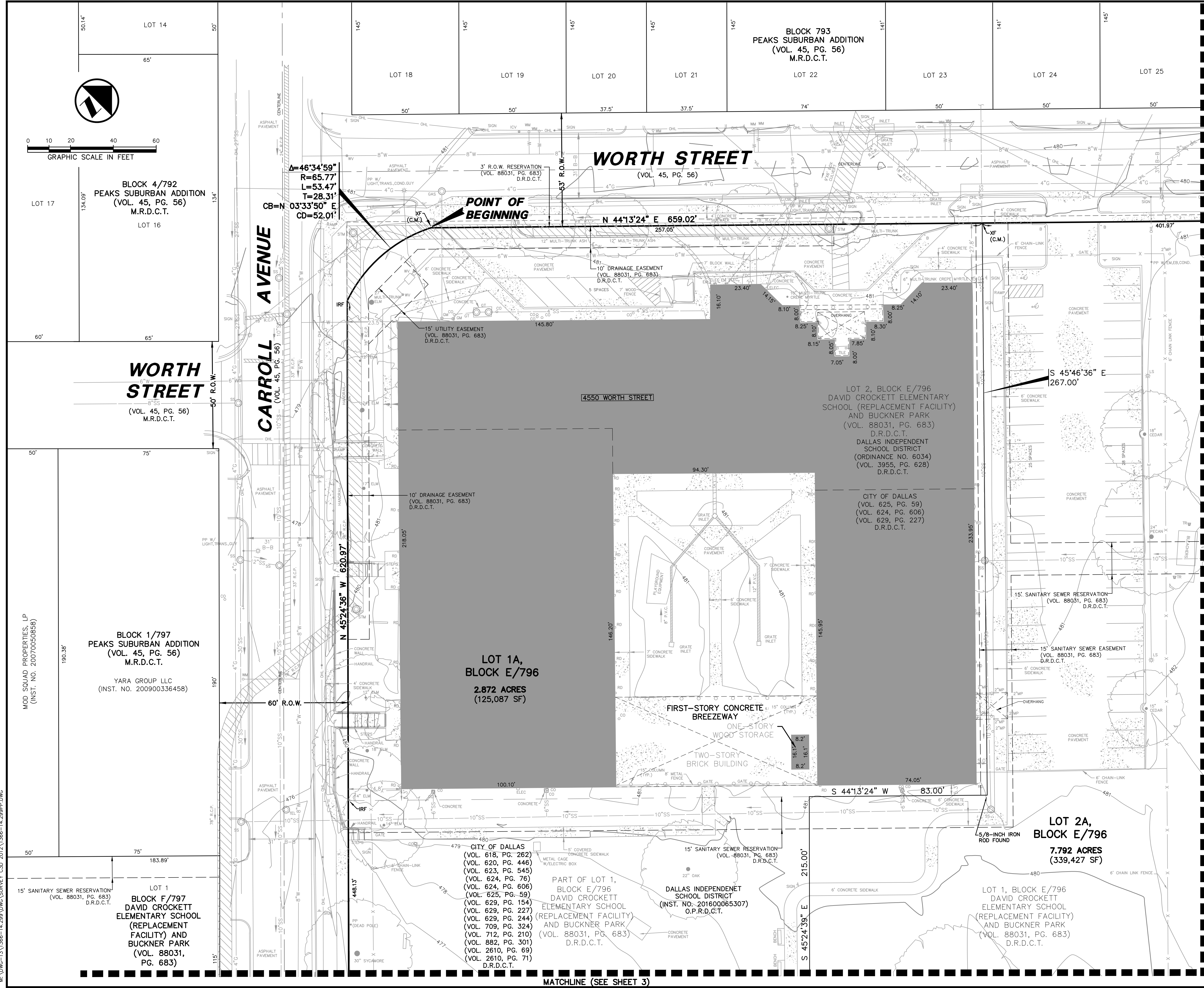
OWNER:  
CITY OF DALLAS  
1500 MARILLA STREET  
DALLAS, TEXAS 75201  
PH: (214) 670-4074  
CONTACT: WILLIS C. WINTERS

SURVEYOR / ENGINEER:  
PACHECO KOCH CONSULTING ENGINEERS  
8350 N. CENTRAL EXPWY. SUITE 1000  
DALLAS, TEXAS 75206  
PH: 972-235-3031  
CONTACT: KYLE COLEMAN HARRIS

**PRELIMINARY PLAT**  
**BUCKNER PARK**  
BEING A REPLAT OF ALL OF  
LOTS 1 AND 2, BLOCK E/796  
DAVID CROCKETT ELEMENTARY SCHOOL  
(REPLACEMENT FACILITY)  
LOCATED IN THE CITY OF DALLAS, TEXAS  
AND BEING OUT OF THE  
JOHN GRIGSBY SURVEY, ABSTRACT NO. 495,  
DALLAS COUNTY, TEXAS  
SHEET 1 OF 5  
CITY PLAN FILE NO. S156-217

**Pacheco Koch** 8350 N. CENTRAL EXPWY. SUITE 1000  
DALLAS, TX 75206 972.235.3031  
TX REG. ENGINEERING FIRM F-14439  
TX REG. SURVEYING FIRM LS-10193805

DRAWN BY MWW	CHECKED BY KCH	SCALE 1"=20'	DATE JUNE 2016	JOB NUMBER 1366-14.299
-----------------	-------------------	-----------------	-------------------	---------------------------



MOD. SQUAD PROPERTIES, LP  
(INST. NO. 20070008659)

LOT 1  
BLOCK F/797  
DAVID CROCKETT  
ELEMENTARY SCHOOL  
(REPLACEMENT  
FACILITY) AND  
BUCKNER PARK  
(VOL. 88031,  
PG. 683)

BLOCK 1/797  
PEAKS SUBURBAN ADDITION  
(VOL. 45, PG. 56)  
M.R.D.C.T.  
  
YARA GROUP LLC  
(INST. NO. 200900336458)

**LOT 1A,  
BLOCK E/796**  
**2.872 ACRES**  
**(125,087 SF)**

**LOT 2A,  
BLOCK E/796**  
**7.792 ACRES**  
**(339,427 SF)**

CITY OF DALLAS  
(VOL. 618, PG. 262)  
(VOL. 620, PG. 446)  
(VOL. 623, PG. 545)  
(VOL. 624, PG. 76)  
(VOL. 624, PG. 606)  
(VOL. 625, PG. 59)  
(VOL. 629, PG. 154)  
(VOL. 629, PG. 227)  
(VOL. 629, PG. 244)  
(VOL. 709, PG. 324)  
(VOL. 712, PG. 210)  
(VOL. 882, PG. 301)  
(VOL. 2610, PG. 69)  
(VOL. 2610, PG. 71)  
D.R.D.C.T.

DALLAS INDEPENDENT  
SCHOOL DISTRICT  
(INST. NO. 201600065307)  
O.P.R.D.C.T.

LOT 1, BLOCK E/796  
DAVID CROCKETT  
ELEMENTARY SCHOOL  
(REPLACEMENT FACILITY)  
AND BUCKNER PARK  
(VOL. 88031, PG. 683)  
D.R.D.C.T.

MATCHLINE (SEE SHEET 3)

MATCHLINE (SEE SHEET 2)

BUCKNER PARK - PRELIMINARY PLAT

DWG: 1366-14.299.DWG; DATE: 6/1/2016; TIME: 11:43AM; M:\DWG-13\1366-14.299.DWG; SURVEY: CSD; 2012\1366-14.299.DWG